



Frontier of Underwater Technology

DSME UTech

Complete Digital Single Frequency Side Scan Sonar System [S-150]

Features

- Portable System
- Very High Resolution
- Low Power Consumption

Applications

- Fast Acoustic Survey of Ocean,
River, Lake and Dam



CETRAX SYSTEMS LTD.

Hilton Fold, Peterculter, Aberdeen, AB14 0LT, UK

web: www.cetrax.com

email: info@cetrax.com

Complete Digital Single Frequency Side Scan Sonar System [S-150]

SPECIFICATIONS

Towfish

- Stainless Steel (SUS304) • Size : 1,200 × Ø100 (mm)
- Weight (in air) : 27 kg
- Operating Frequency : 400 kHz
- Transducer Radiation
 - 0.3 degree horizontal, 40 degree vertical
- Transducer Depression Angle : 20 degree down
- Transmission Pulse : 15 μ s ~ 100 μ s
- Range : 22.5 m to 150 m
- Altimeter : 200 kHz, 20 degrees
- Depth Sensor : \pm 0.5% Full Scale
- Towing Speed : 1~8 knots
- Operating Depth : 300 m

[Safety Recovery System]

- Safety Pin : Up to 200 kg Shear Strength

[Transit Case]

- Watertight Hard Case

Deck Control Unit

- Size : 490 × 380 × 185 (mm) • Weight : 13 kg
- Weather-Tight Portable PC System
- Monitor : High Luminance Color LCD 15" Fitted
- USB, LAN Interface • Power : 24 VDC, 100 W Max.
- Battery Pack : 24 VDC, 26 Ah

[Position Tracking]

- Nested GPS / DGPS Navigation

Softwares

- Operating System : Windows XP professional

[Operating S/W] RealScan®

- Image Filtering
- Target Marking
- Transducer Protection Function
- Survey Route Planner

[Post-Processing S/W] PostScan®

- Image Save Function
- Target Measurement Function
- Mosaicing
- Partial Image Zoom
- Altitude Line Correction Function

[Post-Processing S/W] MapScan® (Optional)

- Mosaic Data Overlay
- Survey Area Drawing Function
- Marine Chart Overlay Control
- Compatible with CM-93 & S-57

Towing Cable

- DSME UTech Towfish Towing Cable Option
 - Kevlar Reinforced Polyurethane Sheathe Cable
 - Single Coaxial Double Armored Cable

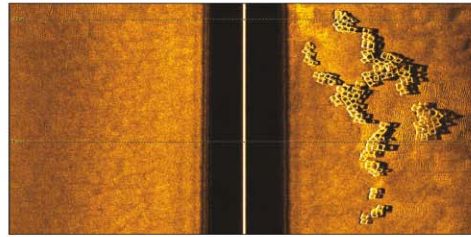
[Polyurethane Cable]

- User Selectable Length Up To 300 m
- Termination
- Portable Cable Reel with Slip Ring
- Kevlar Double Eye Cable Grip

[Single Coaxial Armored Cable]

- User Selectable Length Up To 1,000 m
- Termination
- User Friendly Electric Winch System

SAMPLE IMAGES

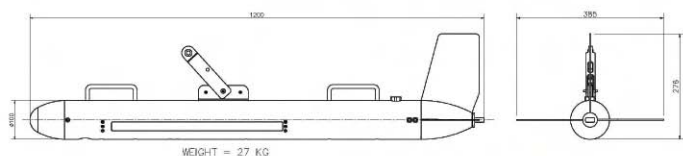


Artificial Reefs



Mosaic Data Overlay

DRAWING



DSME

Frontier of Underwater Technology **UTech**