



Frontier of Underwater Technology

DSME UTech

Portable Digital Single Frequency Side Scan Sonar System [S-150Pi]

Features

- Low Cost (User Provided PC)
- PC Compatible
- Extremely Portable System
- Very High Resolution
- Low Power Consumption

Applications

- Fast Acoustic Survey of Ocean, River, Lake and Dam



CETRAX SYSTEMS LTD.

Hilton Fold, Peterculter, Aberdeen, AB14 0LT, UK

web: www.cetrax.com

email: info@cetrax.com

SPECIFICATIONS

Towfish

- Stainless Steel (SUS304)
- Size : 900 × Ø89 (mm)
- Weight (in air) : 12 kg
- Operating Frequency : 400 kHz
- Transducer Radiation
 - 0.3 degree horizontal, 40 degree vertical
- Transducer Depression Angle : 20 degree down
- Transmission Pulse : 15 μ s ~ 100 μ s
- Range : 22.5 m ~ 150 m
- Depth Sensor : $\pm 0.5\%$ Full Scale
- Temperature Sensor : ± 0.5 °C
- Towing Speed : 1 ~ 8 knots
- Operating Depth : 100 m

[Safety Recovery System]

- Safety Pin : Up to 200 kg

[Carrying Case]

- Watertight Hard Case

Interface Control Unit

- Size : 200 × 250 × 45 (mm)
- Power Requirement : 90-240 VAC & 12-24 VDC, 25 W Compatible
- Operating Temperature : 0 ~ 50 °C
- Operating Humidity : 10 ~ 95% RH, non-condensing
- Interface to PC : USB or Ethernet

[Position Tracking]

- Nested GPS / DGPS Navigation

Softwares

[Operating S/W] RealScan®

- Image Filtering
- Target Marking
- Transducer Protection Function
- Survey Route Planner

[Post-Processing S/W] PostScan®

- Image Save Function
- Target Measurement Function
- Mosaicing
- Partial Image Zoom
- Altitude Line Correction Function

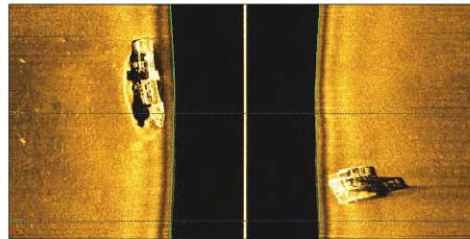
[Post-Processing S/W] MapScan® (optional)

- Mosaic Date Overlay
- Survey Area Drawing Function
- Marine Chart Overlay Control
- Compatible with CM-93 & S-57

Towing Cable

- Kevlar Reinforced Polyurethane Sheathe Cable
- User Selectable Length Up To 300 m
- Termination
- Kevlar Double Eye Cable Grip

SAMPLE IMAGES



Sunken Ship & Artificial Reef



Mosaic Data Overlay

DRAWING

