

Portable Fish Finder : F-400

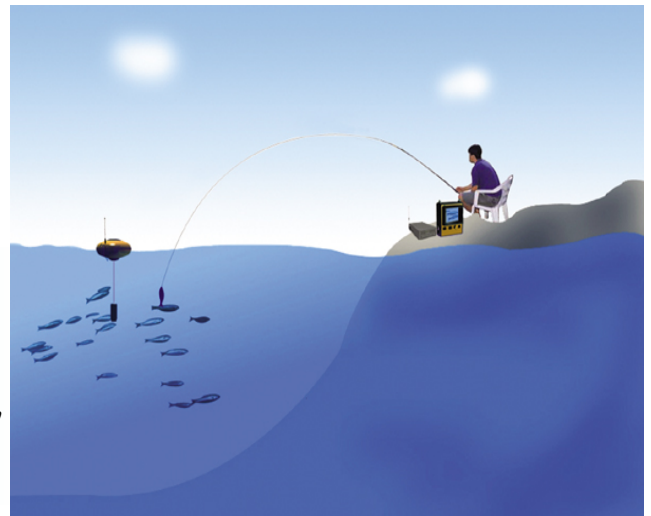


Features

- Aiming in finding Fish/School
- Wrist or Waist Holder
- Waterproof Case for Diving

Applications :

- Rapid Survey of Fish and School
- Precise Detection of Water Depth and Topography
- Underwater Buddy Finding



Specification

- Operating Freq. : 200 kHz
- Area of Coverage : 20° Conical View
- Power Requirement : 3 AAA batteries
- Display : 2.2 inch LCD
- LCD Matrix : 128 V x 64 H Pixels
- Viewing Area : 43.5 V x 29.0 H (mm)
- Depth Range : up to 50 m
- Unit Size : 102 H x 56 W x 26 D (mm)
- Displayer Weight : 86 g without battery
- Transducer Cable Length : Up to 15 m
- Float for Coastal Fishing
- Waterproof Case : 50 m deep (option)